

# PARK PLAZA OFFICE SUITE

1331 Park Plaza, O'Fallon, Illinois 62269



## 1,745 RSF OFFICE SUITE FOR LEASE

### PROPERTY OVERVIEW

- Suite 3 - 1,745 Rentable SF
- Professionally managed building, built in 1999
- Well maintained common area to include restrooms
- Adequate Parking
- Close proximity to retail, restaurants, and both new hospitals (St. Elizabeth and Memorial Hospital East)
- 2 Private Offices - Conference Room - Open Work Space - Reception and Waiting Rooms

### TRAFFIC COUNTS

Hwy 50: 28,400 VPD  
Park Plaza Drive : 1,900 VPD  
Central Park Drive: 11,600 VPD  
I-64: 59,500 VPD

### LEASE RATE

Asking Rate: \$16.50/SF, MG





# PARK PLAZA OFFICE SUITE

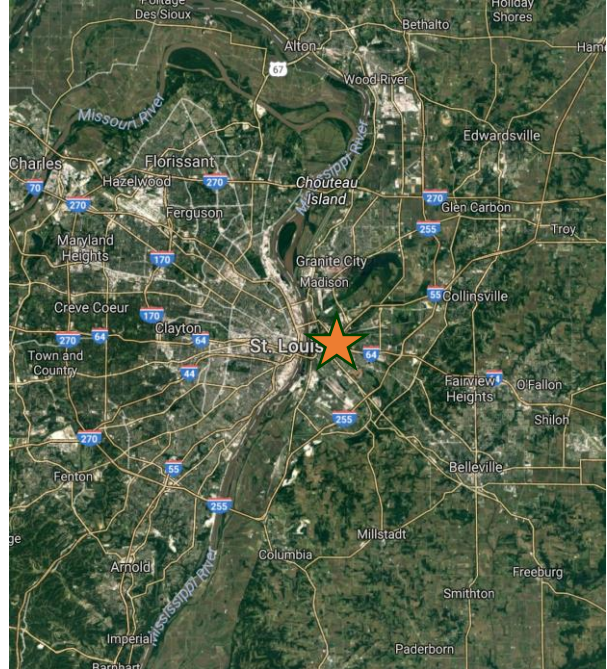
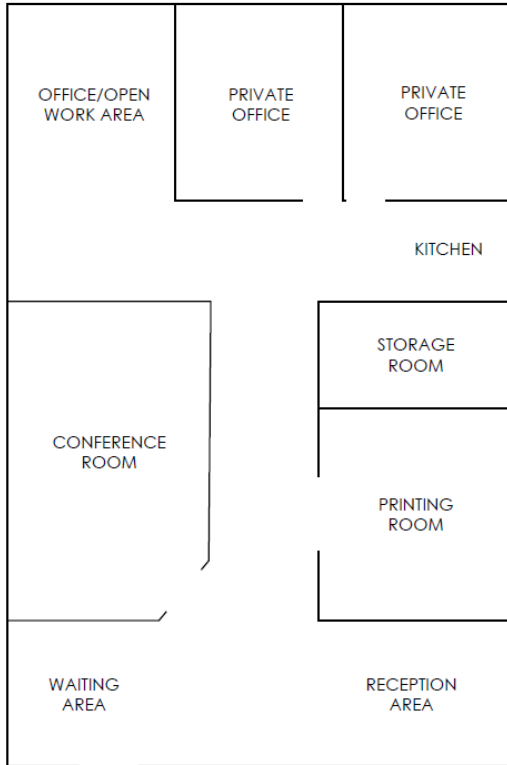
1337 Park Plaza, O'Fallon, Illinois 62269





# PARK PLAZA OFFICE SUITE

1337 Park Plaza, O'Fallon, Illinois 62269



## FOR INFO, PLEASE CONTACT:

### WITTENAUER PROPERTIES

1177 N. Green Mount Road, Suite 201, O'Fallon, IL 62269

Phone: 618-632-5850 | Fax: 618-632-3270 | [www.wittenauproperties.com](http://www.wittenauproperties.com)

David Wittenaue | President | Managing Broker

david@wittenauproperties.com

Office: 618-632-5850

Mobile: 618-719-1197